

AR

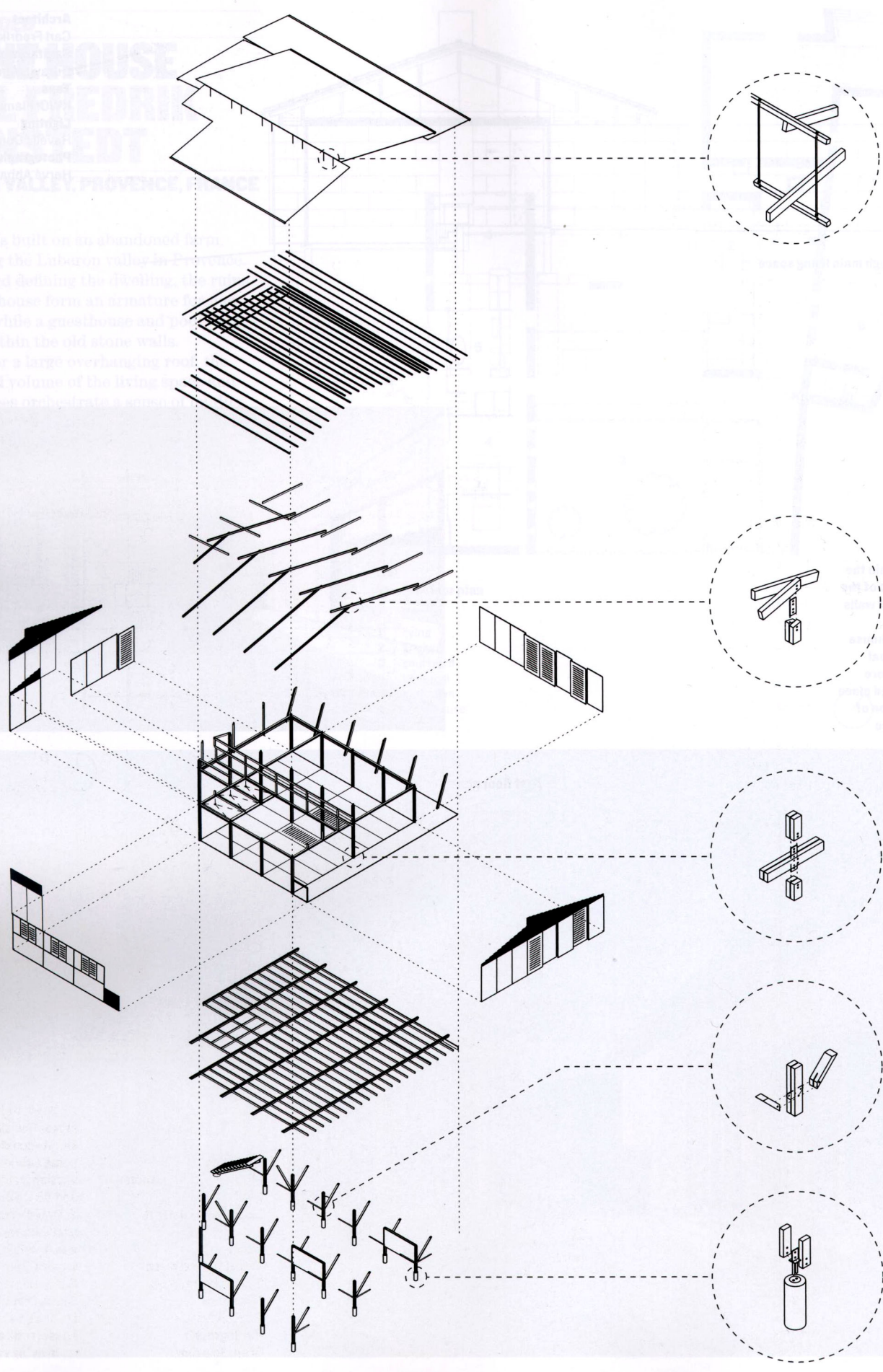


AR
HOUSE

STONEHOUSE
 CARL-FREDRIK
 SVENSSON
 LIBERATION VALLEY, PROVENCE, FRANCE

The house is built up in abandoned stone walls overlooking the Luberon valley in France. Framing and defining the structure of the farmhouse form an ornate set of elements, while a guesthouse and kitchen are inserted within the old stone walls.

Set under a large overhanging roof, the main glazed volume of the living area is a modern interpretation of the traditional stone house.



COMMENDED

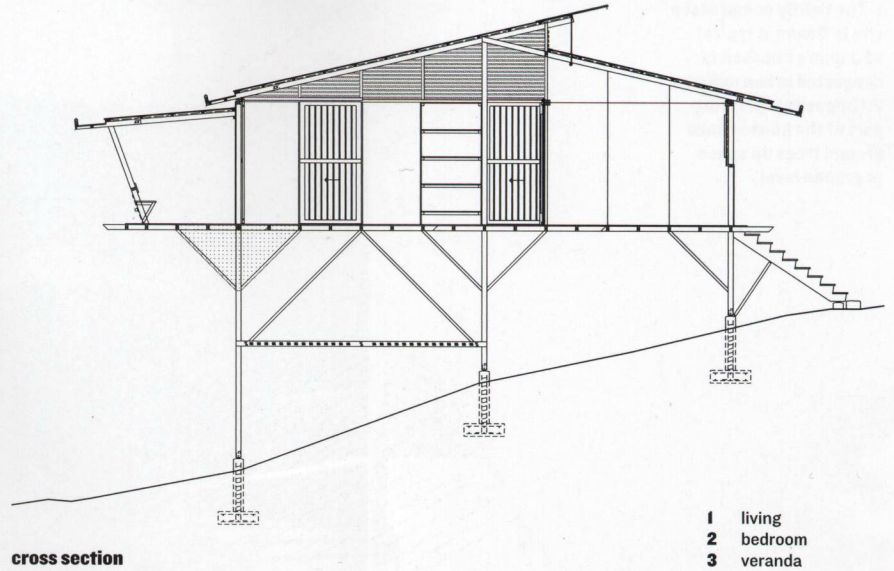
SHELTER @ RAINFOREST

MARRA + YEH
ARCHITECTS

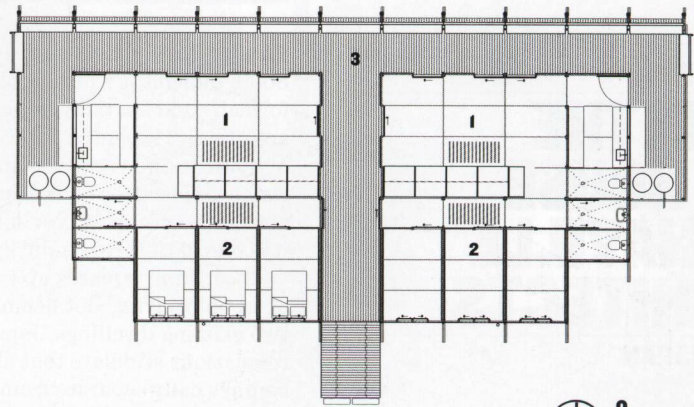
SABAH STATE, BORNEO, MALAYSIA

Commissioned by a forestry company that sustainably harvests and manages 100,000 hectares of tropical rainforest, this house provides accommodation for the company manager, his family and visitors. Elevated on stilts, the house is arranged as two mirrored halves linked by an entry 'dog run' and a long veranda overlooking the forest landscape.

Its form reflects the local vernacular longhouses, with their frugal timber structures, as well as the imperative to live simply and self sufficiently. The house is low cost (£120 per sqm) and autonomous (exploiting rainwater collection, biogas units and electricity from solar panels), while large overhangs and the veranda filter light and temper heat gain. Locally harvested and milled timber is the main building material, limited to just two section sizes. This addresses the reality of scarce resources, increasing the yield per tree, as well as the logistics of processing and construction. Locally fabricated plywood is used as a diaphragm for walls and floors. The jury found it a highly convincing project, emblematic of craft, care and environmental stewardship.



cross section



first floor plan



Architect
Marra + Yeh Architects
Roof
BlueScope Lysaght
Lighting
Philips
Exterior protection
Dulux Solarscreen
Hardware
PC Henderson
Photographs
Brett Boardman

1. (Opposite) an exploded projection shows the simple construction using only two timber section sizes, 100 x 50mm and 50 x 50mm
2. Drawing on vernacular precedents, the house sits lightly in Borneo's tropical rainforest
3. A generous veranda, which funnels cooling breezes through the house, runs along the main living space